



GMT MONTHLY MEMBERSHIP PROGRESS REPORT

Results as of: 11/30/2017

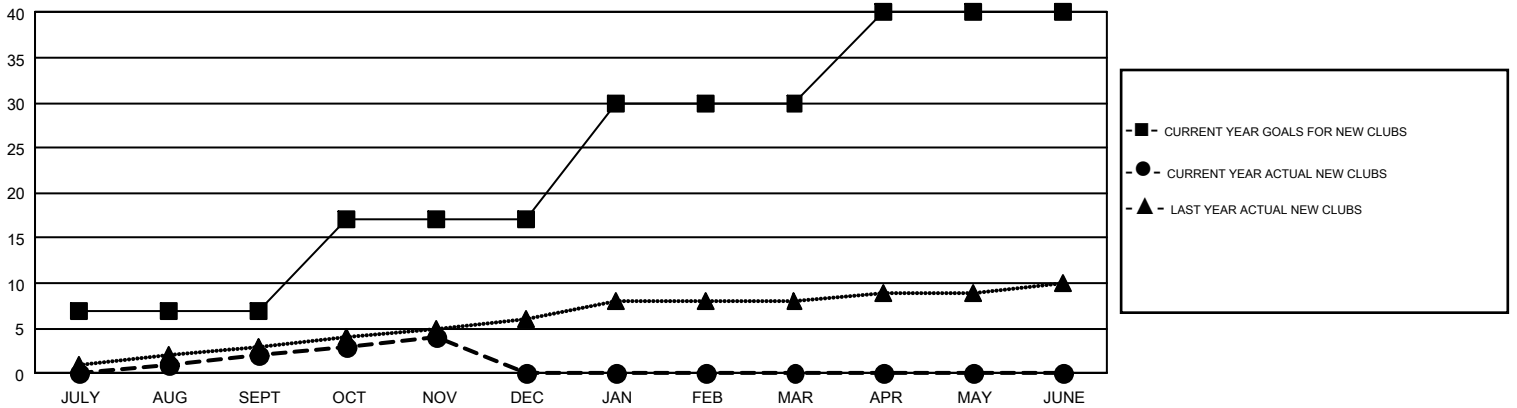
GMT Constitutional Area 1, Group D

GMT: MICHAEL MOLEND A

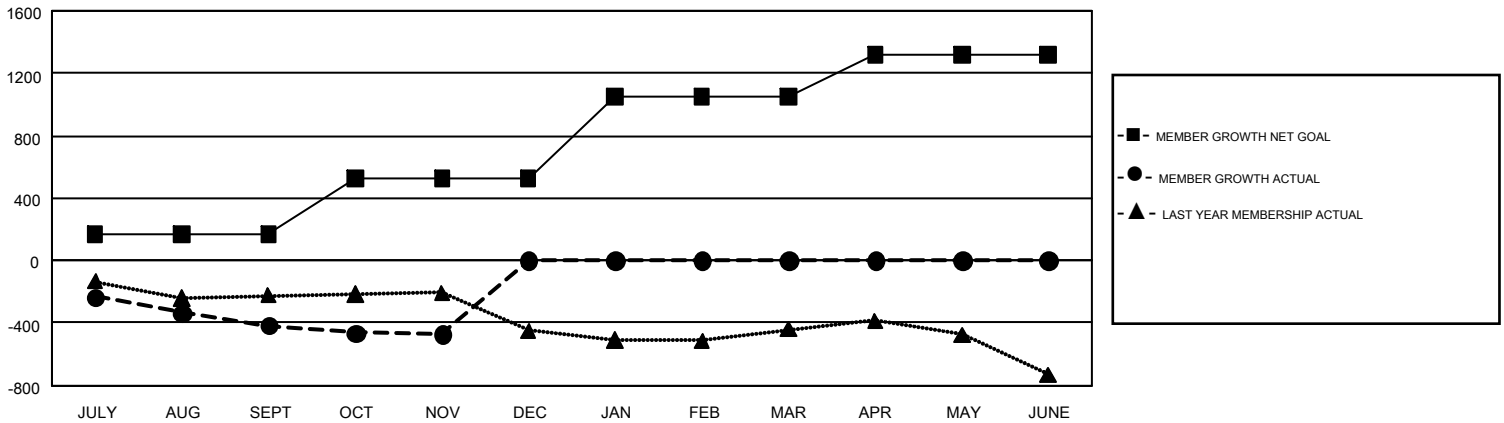
REPORT DOES NOT INCLUDE CLUBS IN UNDISTRICTED AREAS.

Clubs				Members			
RESULTS FOR 2017-2018				RESULTS FOR 2017-2018			
QUARTER	NEW CLUB GOAL	NEW CLUBS	DROPPED CLUBS	QUARTER	MEMBER GROWTH NET GOAL	MEMBER GROWTH ACTUAL	DROPPED MEMBERS ACTUAL (including transfers)
JULY/AUG/SEPT	7	2	5	JULY/AUG/SEPT	169	954	1,243
OCT/NOV/DEC	10	2	3	OCT/NOV/DEC	355	809	791
JAN/FEB/MAR	13	0	0	JAN/FEB/MAR	528	0	0
APR/MAY/JUNE	10	0	0	APR/MAY/JUNE	266	0	0

GOALS AND ACTUAL NEW CLUBS CUMULATIVE



GOALS AND ACTUAL MEMBERS CUMULATIVE



DROPPED CLUBS: 8	626 CLUBS OF 1,531 ADDED 1 OR MORE NEW MEMBERS	GENDER DISTRIBUTION MALE 35,856 (74.46%) FEMALE 12,300 (25.54%)
DROPPED MEMBERS DECEASED 279 CLUB CANCELLED 20 OTHER 1,736 <hr/> TOTAL 2,035	CLICK HERE FOR CUMULATIVE MEMBERSHIP DATA	TOTAL FAMILY UNIT MEMBERS 9,272 FAMILY MEMBERS PAYING HALF DUES 4,704